

Migrating Your Infrastructure to SUSE® Customer Center

Duncan MacVicar

Engineering Manager, SUSE Manager
SUSE <dmacvicar@suse.com>

Klaus Kämpf

Product Owner, SUSE Manager
SUSE <kkaempf@suse.com>



Overview

- About SUSE Customer Center (SCC)
- Infrastructure scenarios
 - Migrating a single system
 - Migrating Subscription Management Tool (SMT)
 - Migrating SUSE Manager
- Outlook

About SUSE Customer Center (SCC)

What is SUSE Customer Center?

SUSE Customer Center (SCC) is the central place for:

Management of
Purchased
Subscriptions



What is a Customer Center?

SUSE Customer Center (SCC) is the central place for:

Management of
Purchased
Subscriptions

Entitlements
Management

What is a Customer Center?

SUSE Customer Center (SCC) is the central place for:

Management of
Purchased
Subscriptions



Entitlements
Management



Access to Support



In a nutshell

- SUSE Customer Center grants you access to product and update channels
- Single sign-on with Novell Customer Center

<https://scc.suse.com>

Planning a migration

Planning a migration

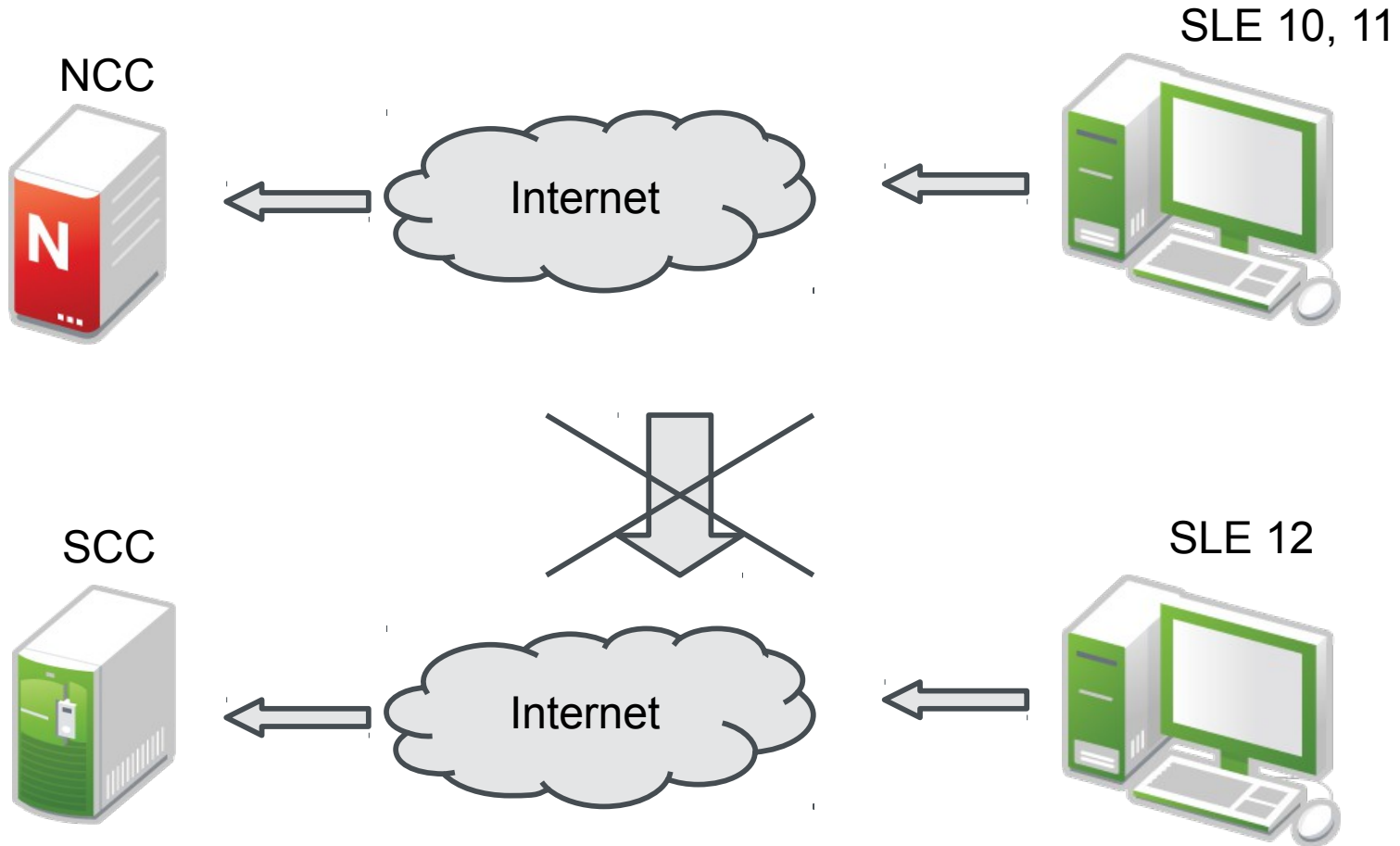
- Migrate **only** if you want to run SLE 12
 - No SLE 12 -> no migration required
- Only affects SMT and SUSE Manager
- Migration takes 10-15 minutes
- Channel re-sync not needed

Infrastructure scenarios

Migrating a single system

Infrastructure scenarios

Scenario 1 – directly connected systems



Migrating a single system

Is not needed

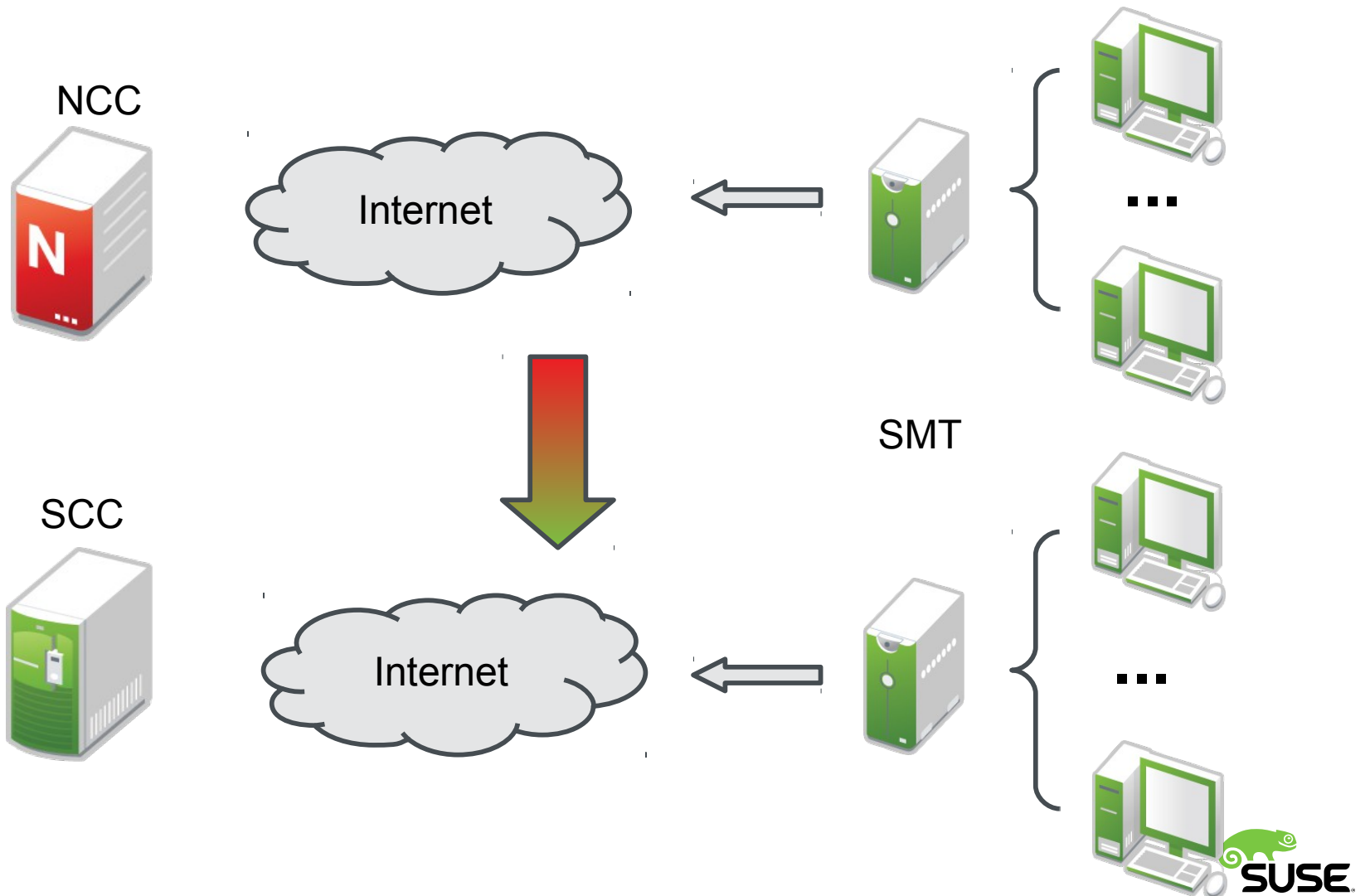
- No change on a registered system
- SLES 10, 11 will continue to contact Novell Customer Center (NCC), resp. Subscription Management Tool (SMT), resp. SUSE Manager
- SLES 12 will register against SUSE Customer Center (SCC), resp. Subscription Management Tool (SMT), resp. SUSE Manager
- Open Enterprise Server (OES) stays with NCC



Migrating Subscription Management Tool (SMT)

Infrastructure scenarios

Scenario 2 – Subscription Management Tool (SMT)



Migrating SMT

- Update to version 2.0.7

- Run

```
smt ncc-scc-migration
```

on the command line

- Re-sync products and subscriptions
- Refresh repositories

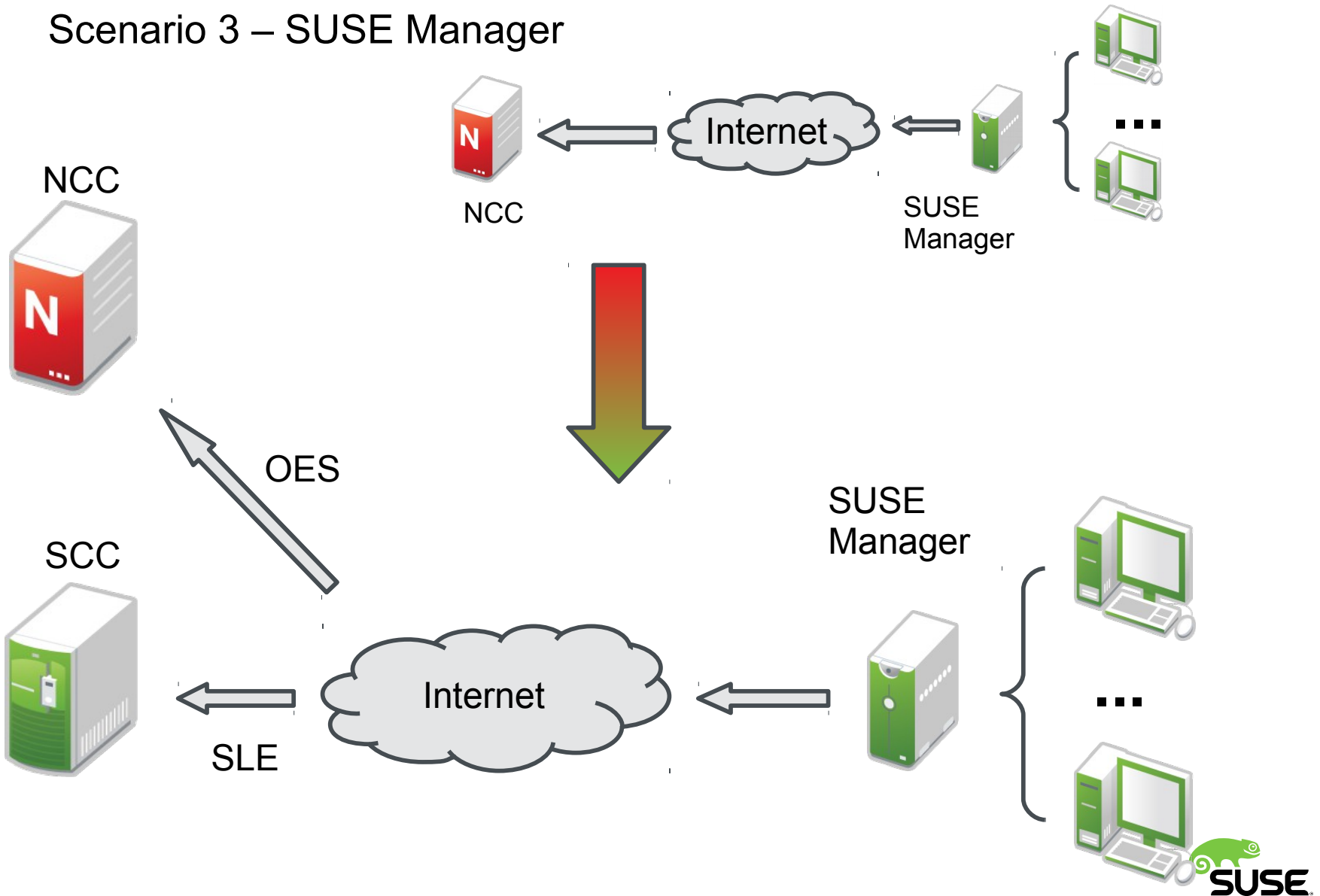
Migrating SUSE Manager

Migrating SUSE Manager

- Requires SUSE Manager 2.1
- Patch not released yet
- Open beta test
- Final release by end of year

Infrastructure scenarios

Scenario 3 – SUSE Manager



Command-line migration

Improved mgr-ncc-sync

	NCC	SCC
Tool	<code>mgr-ncc-sync</code>	<code>mgr-sync</code>
Adding products	<code>mgr-ncc-sync --add-product</code>	<code>mgr-sync add product</code>
Listing products	<code>mgr-ncc-sync --list-products</code>	<code>mgr-sync list products</code>
Migrate to SCC		<code>mgr-sync enable-scc</code>

Migration from inside SUSE Manager

The screenshot displays the SUSE Manager web interface. At the top, the word "Manager" is visible on the left, and a navigation bar contains "Systems", "Patches", "Channels", "Audit", "Configuration", "Schedule", "Users", "Admin", and "Help". A search bar with the text "Search" and a magnifying glass icon is on the right. Below the navigation bar, a light blue notification box contains the text: "You are currently connected to the Novell Customer Center (NCC). Migrate to the new [SUSE Customer Center \(SCC\)](#) for the best customer experience." Below the notification, the "Overview" page is shown with a help icon and a question mark. The "Tasks" section lists three items: "Manage Entitlements and Subscriptions:" with links to "My Organization" and "SUSE Manager-Wide", "Register Systems", and "Manage Activation Keys". The "Inactive Systems" section displays the message: "No inactive systems. All of your systems are actively checking into SUSE Manager at this time. You can view a list of all of your systems at [Systems > All](#)."

Migration from inside SUSE Manager

Bare-metal systems

SUSE Customer Center

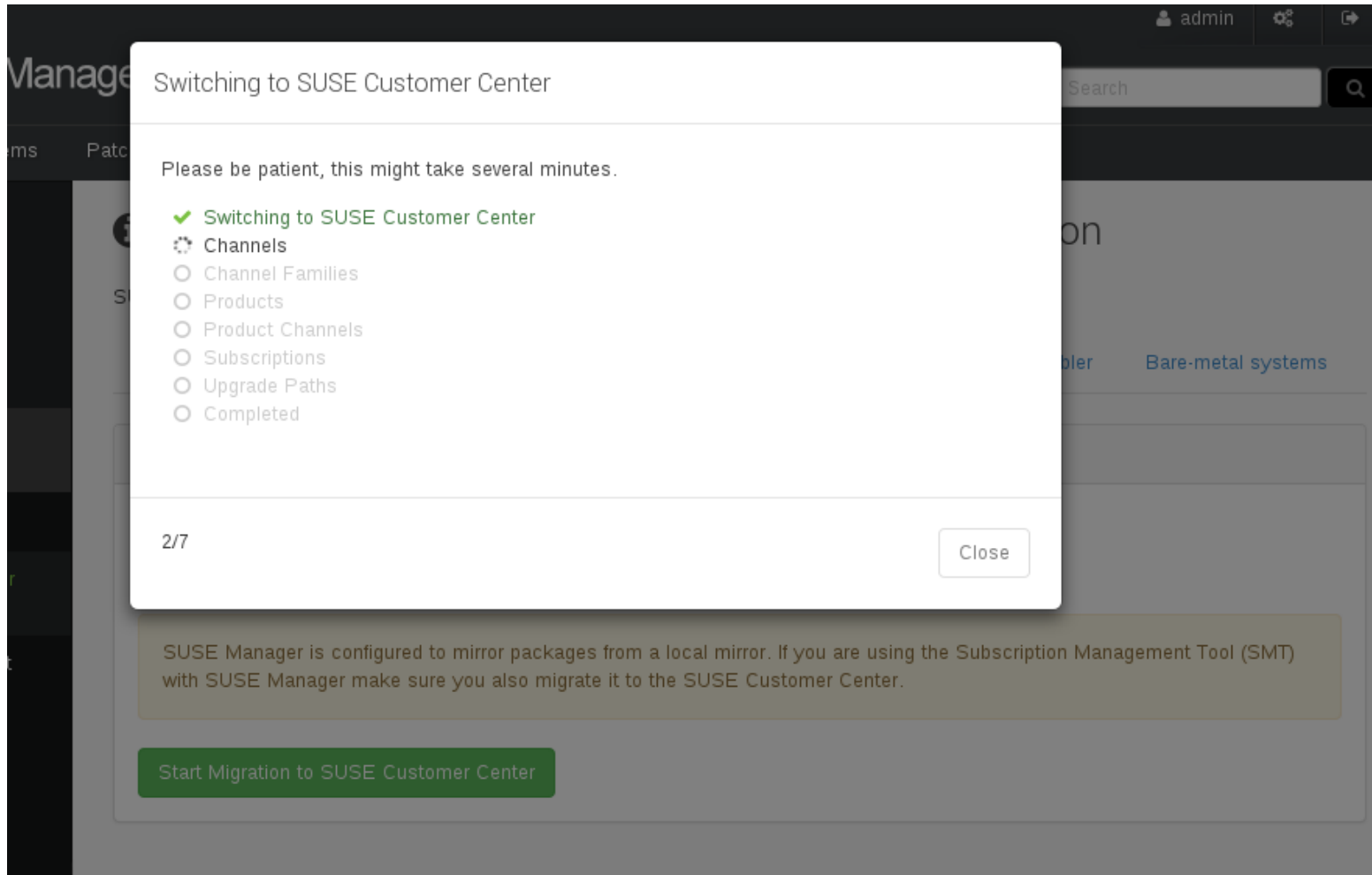
 SUSE Manager is still connected to the Novell Customer Center.

Migration is a straightforward process but may take some minutes.

SUSE Manager is configured to mirror packages from a local mirror. If you are using the Subscription Management Tool (SMT) with SUSE Manager make sure you also migrate it to the SUSE Customer Center.

Start Migration to SUSE Customer Center

Migration from inside SUSE Manager

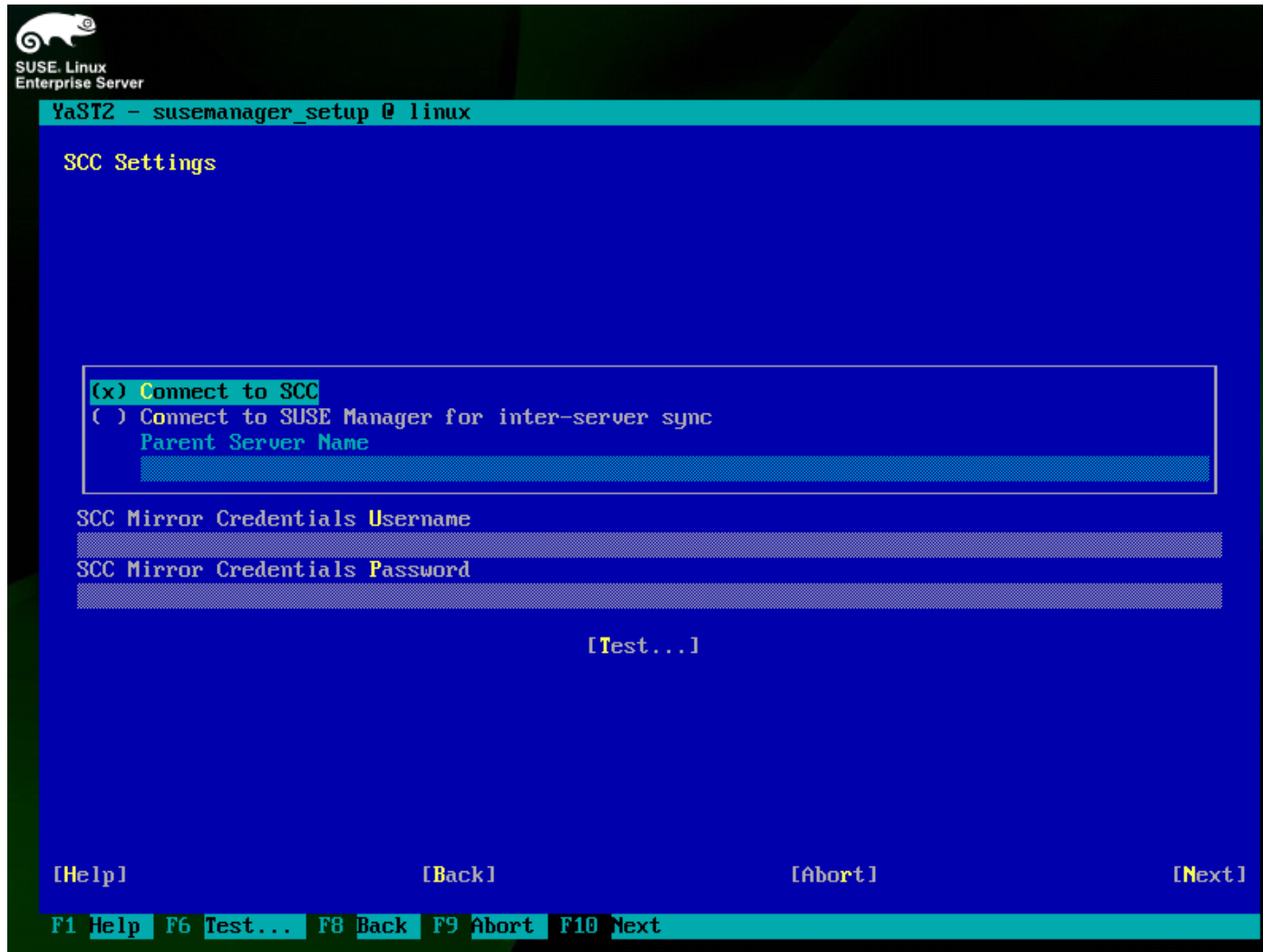


The screenshot shows the SUSE Manager web interface. A modal dialog box is centered on the screen, titled "Switching to SUSE Customer Center". The dialog contains the following text and elements:

- Header: Switching to SUSE Customer Center
- Message: Please be patient, this might take several minutes.
- Progress list:
 - ✓ Switching to SUSE Customer Center
 - ⌘ Channels
 - Channel Families
 - Products
 - Product Channels
 - Subscriptions
 - Upgrade Paths
 - Completed
- Footer: 2/7
- Close button: Close

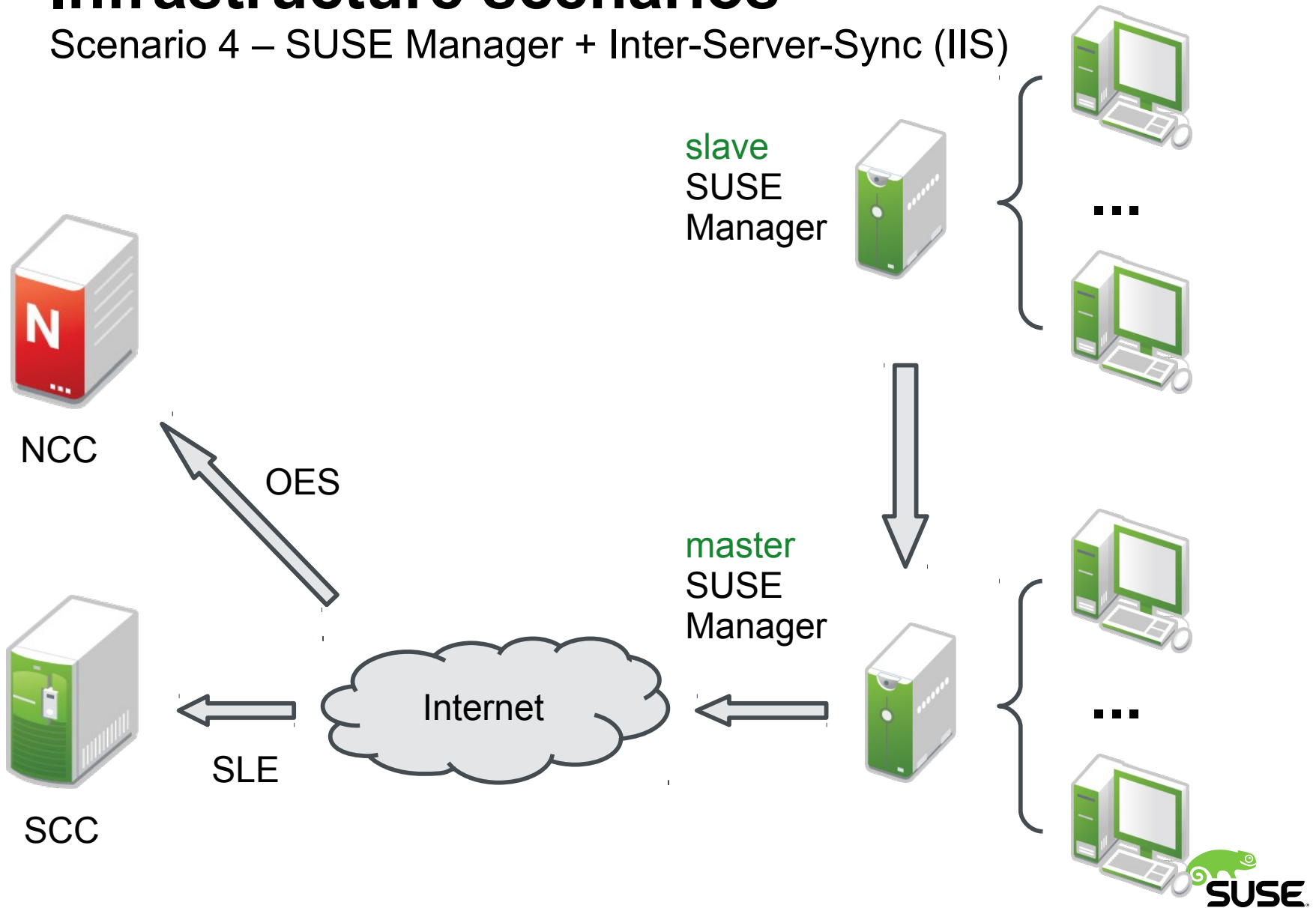
Below the dialog, a grey informational box contains the text: "SUSE Manager is configured to mirror packages from a local mirror. If you are using the Subscription Management Tool (SMT) with SUSE Manager make sure you also migrate it to the SUSE Customer Center." Below this box is a green button labeled "Start Migration to SUSE Customer Center".

New installations use SCC



Infrastructure scenarios

Scenario 4 – SUSE Manager + Inter-Server-Sync (IIS)



Summary

SUSE Manager

- Migration can be done within SUSE Manager in a assisted straightforward process
- Migration can be done/scripted via the command line
- Inter-Server-Sync
 - Ensure that master is running the latest updates. Then both can be migrated in the same straightforward way

Migrating SUSE Manager with SMT

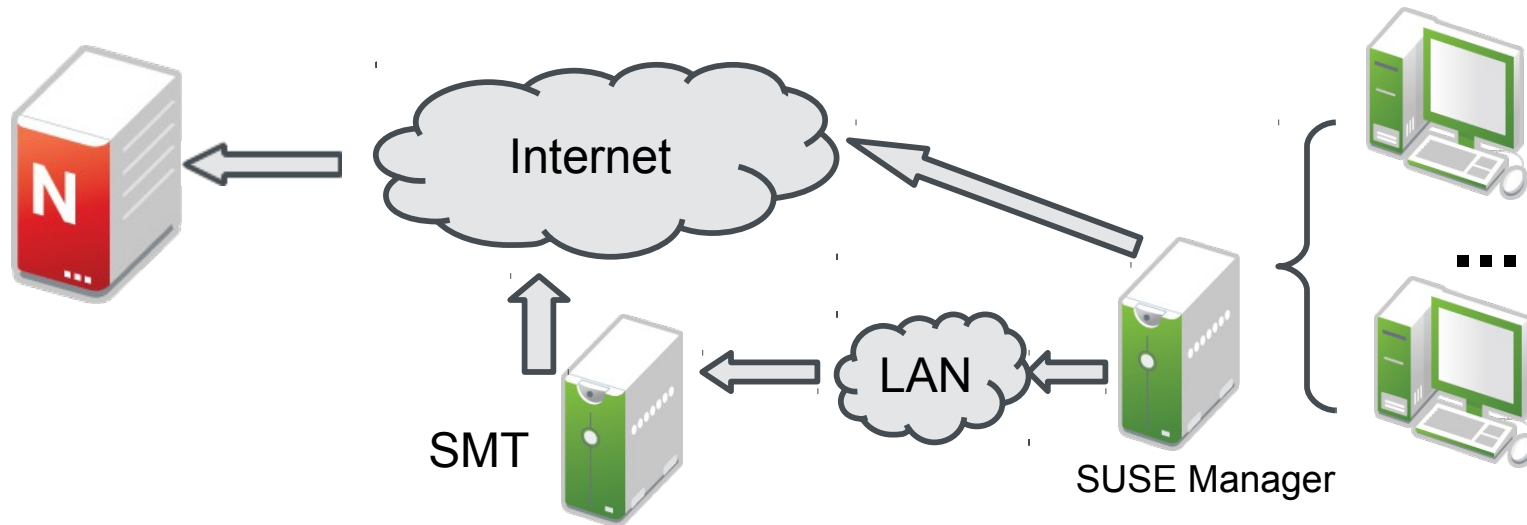
SUSE Manager + SMT Scenarios

	“From Mirror”	“From Dir” (Sneakernet)
Purpose	Speeding package download from existing SMT server	Disconnected SUSE Manager
SUSE Manager accesses NCC/SCC directly	Yes	No
Data accessed from SMT	Packages	Packages and Product/Subscription information
Data accessed from NCC/SCC	Product/Subscription information	None



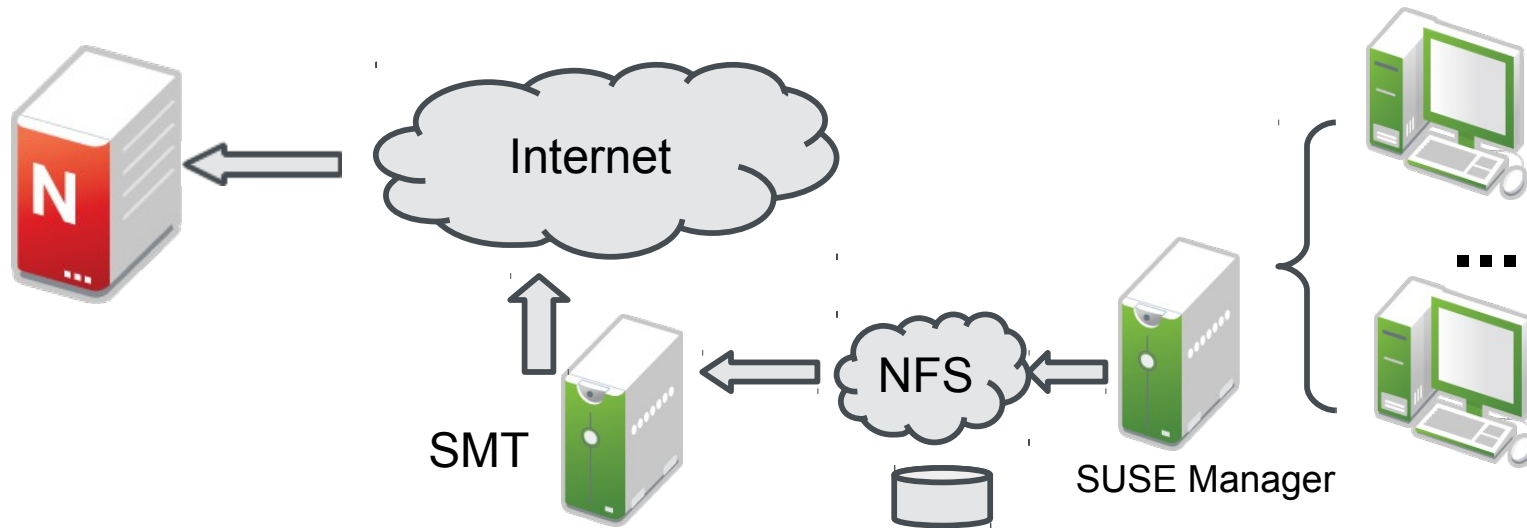
Infrastructure scenarios

Scenario 4 – SUSE Manager with SMT as content mirror (via http)



Infrastructure scenarios

Scenario 5 – disconnected SUSE Manager with SMT (sneakernet)



Summary

SUSE Manager + SMT

- SMT and SUSE Manager must be migrated
- Perform a migration of the SMT server first
- Migrate SUSE Manager last

Download infrastructure changes

Download infrastructure

	Content	Access
SLE 10 / SLE 11	nu.novell.com	NCC
SLE 12	updates.suse.com	SCC

Repository access

SLE 10 / 11

[https://nu.novell.com/repo/\\$RCE/SLES11-SP3-Pool](https://nu.novell.com/repo/$RCE/SLES11-SP3-Pool)

- '\$' in URL
- Basic auth

SLE 12

<https://updates.suse.com/SUSE/Products/SLE-SERVER/12?<token>>

- Cleaner URL
- Token auth



Summary

Summary

When to migrate to SCC

- SLES 10 - no need
- SLES 11 - no need
- Open Enterprise Server (OES) – no need
- SLES 12 - yes !
 - SMT first
 - then SUSE Manager

Come see us at the booth.

Follow @susemanager on
twitter.

Thank you.







Corporate Headquarters
Maxfeldstrasse 5
90409 Nuremberg
Germany

+49 911 740 53 0 (Worldwide)
www.suse.com

Join us on:
www.opensuse.org

Unpublished Work of SUSE LLC. All Rights Reserved.

This work is an unpublished work and contains confidential, proprietary and trade secret information of SUSE LLC. Access to this work is restricted to SUSE employees who have a need to know to perform tasks within the scope of their assignments. No part of this work may be practiced, performed, copied, distributed, revised, modified, translated, abridged, condensed, expanded, collected, or adapted without the prior written consent of SUSE. Any use or exploitation of this work without authorization could subject the perpetrator to criminal and civil liability.

General Disclaimer

This document is not to be construed as a promise by any participating company to develop, deliver, or market a product. It is not a commitment to deliver any material, code, or functionality, and should not be relied upon in making purchasing decisions. SUSE makes no representations or warranties with respect to the contents of this document, and specifically disclaims any express or implied warranties of merchantability or fitness for any particular purpose. The development, release, and timing of features or functionality described for SUSE products remains at the sole discretion of SUSE. Further, SUSE reserves the right to revise this document and to make changes to its content, at any time, without obligation to notify any person or entity of such revisions or changes. All SUSE marks referenced in this presentation are trademarks or registered trademarks of Novell, Inc. in the United States and other countries. All third-party trademarks are the property of their respective owners.

