

Hands on session on Docker

Flavio Castelli

Senior Software engineer

fcastelli@suse.com

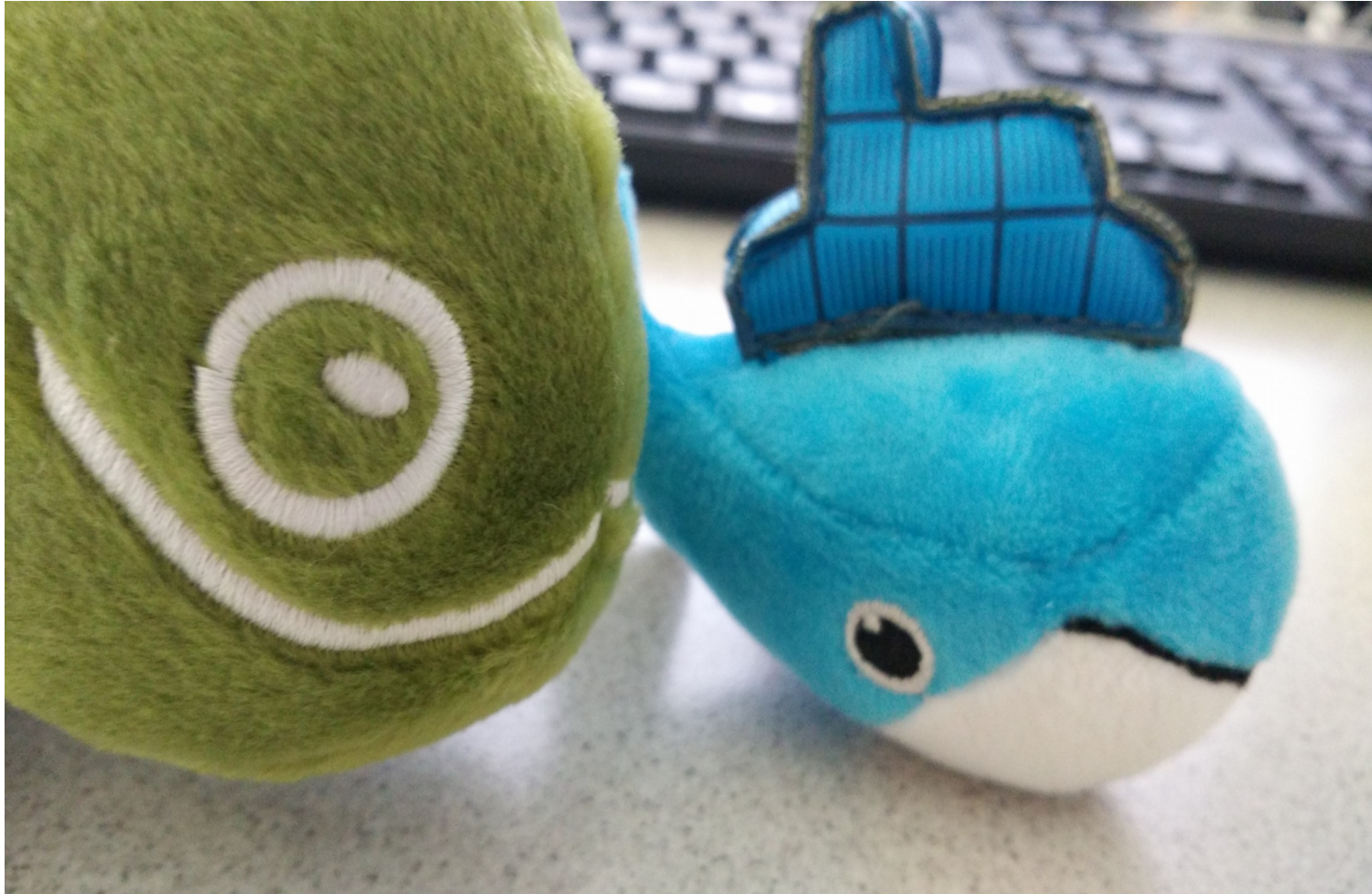
Federica Teodori

Project Manager

fteodori@suse.com



Installing Docker



Base images

- Get the images
- Activate the images (sle2docker)

Personalize the images (1/2)

- Dockerfiles

Personalize the images (2/2)

- Docker build

Run and access the container

- Docker run
- Accessing the container

Lifecycle

- Why update images
- Best practices
- zypper-docker

Docker registry

- Store your images
- Install and configure
- Interact with the registry
- What is missing

Portus

- Why use Portus
- Install and configure
- Create users and teams
- Push images
- Pull images

Questions & Answers





Corporate Headquarters
Maxfeldstrasse 5
90409 Nuremberg
Germany

+49 911 740 53 0 (Worldwide)
www.suse.com

Join us on:
www.opensuse.org

Unpublished Work of SUSE LLC. All Rights Reserved.

This work is an unpublished work and contains confidential, proprietary and trade secret information of SUSE LLC. Access to this work is restricted to SUSE employees who have a need to know to perform tasks within the scope of their assignments. No part of this work may be practiced, performed, copied, distributed, revised, modified, translated, abridged, condensed, expanded, collected, or adapted without the prior written consent of SUSE. Any use or exploitation of this work without authorization could subject the perpetrator to criminal and civil liability.

General Disclaimer

This document is not to be construed as a promise by any participating company to develop, deliver, or market a product. It is not a commitment to deliver any material, code, or functionality, and should not be relied upon in making purchasing decisions. SUSE makes no representations or warranties with respect to the contents of this document, and specifically disclaims any express or implied warranties of merchantability or fitness for any particular purpose. The development, release, and timing of features or functionality described for SUSE products remains at the sole discretion of SUSE. Further, SUSE reserves the right to revise this document and to make changes to its content, at any time, without obligation to notify any person or entity of such revisions or changes. All SUSE marks referenced in this presentation are trademarks or registered trademarks of Novell, Inc. in the United States and other countries. All third-party trademarks are the property of their respective owners.

